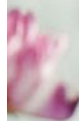




# **BOTANICAL EXTRACTS**

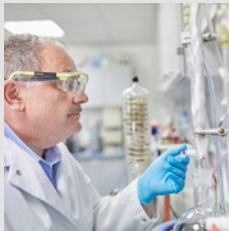
Standard Portfolio Fragrances 2021



# THE MAGIC OF NATURE

---

The magical beauty and diversity of the plant world has enchanted people throughout the ages. Nature provides us with unique fragrances, stunning colours and exceptional ingredients. In the world of skincare, botanical extracts, in particular, have become indispensable. More and more manufacturers are enhancing products with claims about the nurturing, vitalising, soothing or even the cleansing properties of certain flowers, leaves or roots. In doing so, they reflect the spirit of the times and deliver the naturalness and functionality that today's consumers expect.



In response to the trend towards green cosmetics and household care products, Bell Flavors & Fragrances is continuously expanding its range of market-conform botanical extracts offering an impressive sensory experience. We are dedicated to providing ingredients of the highest quality. This begins with the responsible sourcing of raw materials and the use of low-impact extraction methods. We also pay close attention to the relevant regulatory requirements in your market to ensure that we can be a reliable partner in supplying the right botanical extracts for your product, whether you are producing for conventional, nature-inspired or certified natural cosmetics.

This catalogue offers you a compact and updated overview of our portfolio of extracts. We place special emphasis on extracts that stand out in terms of sustainability, such as those from rarely used plant matter. We continue to offer a large number of extracts derived from certified organic cultivation, and we can also support you beyond the standard portfolio presented here with customised botanical extracts or by creating suitable fragrance compositions.

Be inspired!

# NATURALLY SUSTAINABLE

To satisfy changing consumer needs in terms of environmental friendliness and sustainability, Bell offers a growing portfolio of sustainable botanical extracts. Based on the idea of upcycling, we try to utilise high-value by-products such as coffee cherry husk, cocoa peel or chamomile petals, which would otherwise be discarded.

We guarantee the highest quality natural extracts, which are distinguished by their outstanding product characteristics and are suitable for use in a wide variety of care products. From responsible procurement of organic raw materials, to packaging and storage, to the extraction and composting of the plants used, we attach the highest importance to environmentally friendly, resource-efficient and low-impact production.



Discover our sustainable botanical extracts!

Botanical	A	PW	Gly	w.s.	o.s.	Org
Chamomile Dust	+		+			+
Chamomile Petal	+		+			+
Cherry Stem	+		+		+	
Cocoa Peel	+		+		+	
Coffee Cherry Husk	+		+		+	+
Grapefruit Peel	+					+
Lemon Peel			+			+
Orange Peel (bitter)	+					
Orange Peel (sweet)	+					+

## Legend

A – alcohol (alcohol/water)

PW – propylene glycol/water

Gly – glycerin (glycerin/water)

w.s. – water-soluble

o.s. – oil-soluble

Org – organic

## Note

We produce our botanical extracts order-related.

Therefore, there may be seasonal availability bottlenecks.

## BOTANICAL EXTRACTS

### STANDARD-PORTFOLIO FRAGRANCES 2021

Botanical	A	PW	Gly	w.s.	o.s.	Org
Acaiberry	+	+	+			
Acerola	+	+	+			
Agave	+	+	+			+
Algae	+	+	+	+	+	
Almond	+	+	+	+		+
Aloe	+	+	+	+	+	+
Amber	+	+	+		+	
Apple	+	+	+			
Apricot	+	+	+			
Arnica	+	+	+			+
Avocado	+	+				
Balm	+	+	+	+	+	+
Bamboo	+	+	+		+	+
Basil	+		+		+	
Bearberry	+	+	+			
Birch	+	+	+		+	+
Blackberry	+		+			
Burdock	+	+	+			
Calendula	+	+	+		+	+
Cedarwood	+	+	+		+	+

#### Legend

A – alcohol (alcohol/water)

PW – propylene glycol/water

Gly – glycerin (glycerin/water)

w.s. – water-soluble

o.s. – oil-soluble

Org – organic

#### Note

We produce our botanical extracts order-related. Therefore, there may be seasonal availability bottlenecks.

## BOTANICAL EXTRACTS

### STANDARD-PORTFOLIO FRAGRANCES 2021

Botanical	A	PW	Gly	w.s.	o.s.	Org
Centella	+	+	+		+	
 Chamomile*	+	+	+		+	+
 Cherry*	+	+	+		+	
 Cocoa*	+	+	+		+	+
Coconut	+	+	+		+	+
 Coffee Cherry Husk*	+		+		+	+
Comfrey	+	+	+		+	
Cornflower	+	+			+	+
Cotton	+	+	+		+	
Cranberry	+	+	+		+	+
Crystal Water	+					
Cucumber	+	+	+		+	+
Curcuma	+	+	+		+	
Currant	+	+	+			+
Devils Claw	+	+	+		+	+
Dragon Fruit	+	+	+			
Dyer's Woad	+		+		+	
Echinacea	+	+	+			+
Elderflower	+	+	+			+
Eucalyptus	+	+	+		+	+

#### Legend

A – alcohol (alcohol/water)

PW – propylene glycol/water

Gly – glycerin (glycerin/water)

w.s. – water-soluble

o.s. – oil-soluble

Org – organic

#### Note

We produce our botanical extracts order-related.

Therefore, there may be seasonal availability bottlenecks.

\* available as sustainable alternative, see page 3

## BOTANICAL EXTRACTS

### STANDARD-PORTFOLIO FRAGRANCES 2021

Botanical	A	PW	Gly	w.s.	o.s.	Org
<b>Eyebright</b>	+	+	+	+		+
<b>Fig</b>	+	+	+		+	
<b>Frangipani</b>	+					
<b>Ginger</b>	+	+	+	+	+	+
<b>Ginkgo</b>	+	+	+		+	+
<b>Ginseng</b>	+		+			
 <b>Grapefruit*</b>	+		+		+	+
<b>Green Coffee</b>	+	+	+		+	+
<b>Green Tea</b>	+	+	+	+	+	+
<b>Guarana</b>	+	+	+		+	+
<b>Hemp</b>	+	+	+		+	
<b>Hibiscus</b>	+	+	+		+	+
<b>Honey</b>	+	+	+			
<b>Hops</b>	+	+	+			+
<b>Horse Chestnut</b>	+	+	+		+	
<b>Horsetail</b>	+	+	+		+	+
<b>Indigo</b>	+	+	+			
<b>Jasmine</b>	+	+	+		+	
<b>Juniper</b>	+	+	+	+		
<b>Kiwi</b>	+	+	+			

#### Legend

A – alcohol (alcohol/water)

PW – propylene glycol/water

Gly – glycerin (glycerin/water)

w.s. – water-soluble

o.s. – oil-soluble

Org – organic

#### Note

We produce our botanical extracts order-related. Therefore, there may be seasonal availability bottlenecks.

\* available as sustainable alternative, see page 3

## BOTANICAL EXTRACTS

### STANDARD-PORTFOLIO FRAGRANCES 2021

Botanical	A	PW	Gly	w.s.	o.s.	Org
Lavender	+	+	+			+
Lemon verbena	+	+	+			
 Lemon*	+	+	+			+
Lemongras	+	+	+		+	
Licorice	+	+	+		+	
Lime	+		+		+	+
Lime Blossom	+	+	+		+	+
Logwood	+	+	+		+	
Lotus	+	+	+			+
Lupin	+		+		+	+
Macadamia	+					
Mallow	+	+	+		+	+
Mango	+	+	+			
Matcha Tea	+		+			+
Milk Protein	+		+			
Millet	+	+	+		+	
Monoï					+	
Nettle	+	+	+		+	+
Oat	+	+	+		+	+
 Olive*	+	+	+		+	+

#### Legend

A – alcohol (alcohol/water)

PW – propylene glycol/water

Gly – glycerin (glycerin/water)

w.s. – water-soluble

o.s. – oil-soluble

Org – organic

#### Note

We produce our botanical extracts order-related.

Therefore, there may be seasonal availability bottlenecks.

\* available as sustainable alternative, see page 3

## BOTANICAL EXTRACTS

### STANDARD-PORTFOLIO FRAGRANCES 2021

Botanical	A	PW	Gly	w.s.	o.s.	Org
 Orange*	+	+	+	+		+
Pansy	+	+	+		+	+
Papaya	+	+	+			+
Passion Fruit	+	+	+		+	+
Peach	+	+	+			
Pearl	+	+				
Peony	+		+		+	
Peppermint	+	+	+	+	+	+
Pine	+	+	+			
Plum	+	+	+			
Pomegranate	+	+	+			+
Pongee		+	+			
Poppy	+	+	+		+	
Quince	+	+	+			+
Raspberry	+	+	+			
Red Clover	+	+	+			
Redwood	+		+		+	
Rose	+	+	+	+	+	+
Rose Hip	+	+	+	+		+
Rosemary	+	+	+		+	+

#### Legend

A – alcohol (alcohol/water)

PW – propylene glycol/water

Gly – glycerin (glycerin/water)

w.s. – water-soluble

o.s. – oil-soluble

Org – organic

#### Note

We produce our botanical extracts order-related. Therefore, there may be seasonal availability bottlenecks.

\* available as sustainable alternative, see page 3



## BOTANICAL EXTRACTS

### STANDARD-PORTFOLIO FRAGRANCES 2021

Botanical	A	PW	Gly	w.s.	o.s.	Org
Sage	+	+	+	+	+	+
Schisandra Berry	+	+	+		+	
Sea Buckthorn	+	+	+		+	+
Strawberry	+		+			
Sunflower	+	+	+		+	
Thyme	+	+	+		+	+
Tonka	+	+	+		+	
Vanilla	+	+	+		+	+
Vine Leaves	+	+	+		+	+
Violet	+	+	+		+	
Walnut Shell	+		+		+	+
Watermelon	+		+			
White Tea	+	+	+			+
Witch Hazel	+	+	+		+	+
Yarrow	+	+	+		+	
Ylang -Ylang	+	+	+			

#### Legend

A – alcohol (alcohol/water)

PW – propylene glycol/water

Gly – glycerin (glycerin/water)

w.s. – water-soluble

o.s. – oil-soluble

Org – organic

#### Note

We produce our botanical extracts order-related. Therefore, there may be seasonal availability bottlenecks.



## Feel nature's variety.

**Bell Flavors & Fragrances GmbH**  
Schimmelstrasse 1  
04205 Leipzig  
Germany

Tel.: +49.341.9451.0

**[www.bell-europe.com](http://www.bell-europe.com)**

